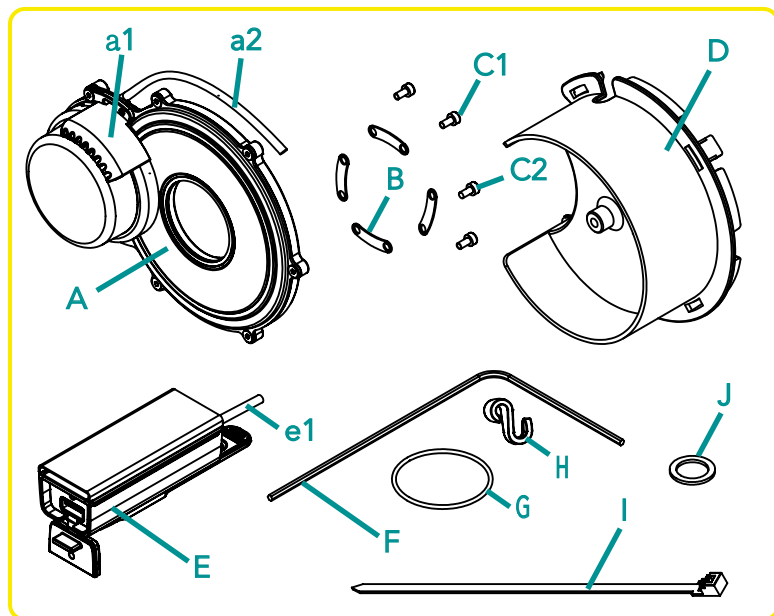


Parts List 內含零件



A. F12W-PRO dynamo 發電機本體	1x	E. USB charger 發電機USB頭	1x
a1. Shockproof rubber 防震橡膠	1x	e1. USB charger cable 發電機USB電線	1x
a2. Dynamo cable 發電機電線	1x	F. M2.5 Allen key M2.5內六角板手	1x
B. Clamps 固定片	12x	G. Rubber «O» ring O型環	4x
C1. M3 x 6mm inner hex screws M3 x 6mm內六角螺絲	8x	H. Mini hook S型扣環	4x
C2. M3 x 8mm inner hex screws M3 x 8mm內六角螺絲	8x	I. Reusable zip tie 可拆式束帶	1x
D. Mounting component 發電機安裝器	1x	J. Washer 墊圈	2x

Installation Instructions 安裝說明

Part 1. Main dynamo 主體安裝

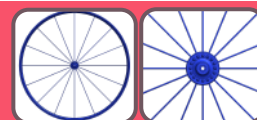


1. Remove quick release and front wheel.
取出前輪快拆，並卸下前輪



2. Place the mounting component (D) and the dynamo F12W-PRO (A) on the table
將包裝盒內的發電機與安裝器拿出，以安裝器朝下發電機朝上的方式放置桌面上

If your wheel is radial spoked, please jump to page 2 Special Installation For Radial Spokes
若輪組為輻射狀(如右圖)，請直接跳至第二頁<幅條狀輪組特殊安裝>



3. Place the right-center axis of the hub onto the dynamo F12W-PRO (A).
將前輪右側貼在發電機黑色面上



4. Reassemble the quick release to the center hole of the wheel and tighten it down with the mounting component (D).
再將拆下的快拆插回至前輪中心孔，向下鎖入安裝器，直至微緊

5-1. Please refer to the following table and calculate the number of the clamps (B) to be mounted on the spokes.
請參考下列表格並先計算發電機與幅條需要鎖幾片固定片(B)

Spoke number 幅條數	36	32	Other
Clamp number 固定片數	3 pcs (every 120°)	4 pcs (every 90°)	3 to 4 pcs (do not less than 3 pcs)



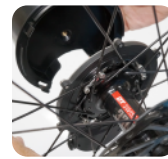
- 5-2. Every clamp (B) must be mounted across to at least one spoke.
Tighten the clamps (B) evenly and slowly in turns.
(Please do not tighten the screws (C1) in once, in some cases the unevenness of each clamp can cause vibrations.)
將發電機固定片跨過至少一支幅條，用M3x6mm螺絲(C1)分次慢慢、平均的鎖固(螺絲請勿一次鎖緊，以防每片固定片鬆緊不均造成搖晃)



6-1. Remove the quick release.
取出快拆



6-2. Take off the mounting component (D).
拆下發電機安裝器



7. Turn the wheel to check if the rotation is smooth.
試著轉動輪圈確認發電機是否轉動順暢



8. Put the front wheel back on to the fork.
將前輪放回前叉內鎖上快拆

※ Please note

If you find that space is insufficient when you put the front wheel back on to the front fork, you can put one or two pieces of washer (J) in the quick release.
若裝回前輪時發現前叉會觸碰到發電機外殼，可放置一至兩片墊圈(J)於快拆內



9. Adjust the shockproof rubber (a1) to the left side of the fork.
調整發電機角度讓發電機靠近前叉左側



10. Tighten the shockproof rubber (a1) from the dynamo F12W-PRO (A) to the fork with the reusable zip tie (I) 將發電機與前叉用可拆式束帶互相綁固

Part 2. USB charger USB頭安裝

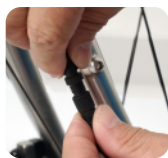


1. Choose a place on the handlebar to mount the USB charger (E).
在手把選擇一處要固定USB充電頭的位置，並裝上USB頭

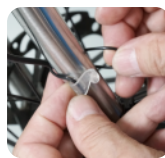
※ Please note

◎ Lower the USB charger (E) head by about 30 degrees when cycling under the rain.
遇到下雨天時，請將USB充電口微朝下約30°放置，避免雨水長時間進入USB充電孔內，影響充電功能

◎ Please use an original or certified USB cable.
請使用原廠充電線

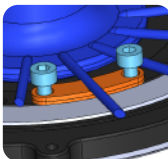


2. Bring the USB charger cable (e1) down to the dynamo F12W-PRO (A). Connect the USB charger cable (e1) and dynamo cable (a2).
將USB充電頭後端電線沿著車頭往發電機本體佈線，並與發電機出口的電線對接並鎖緊



3. Tighten the USB charger cable (e1) with the mini hook (H) and the rubber « O » rings (G) on the fork. 以所附之S扣環及O型環將電線固定於前叉上

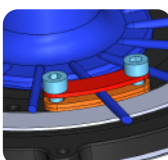
Special Installation For Radial Spokes 幅條狀輪組特殊安裝



1. Please refer to step 5-1 to determine the placement angle of the clamps (B). Tighten two clamps (B) on the dynamo (A) with M3x8mm screw (C2) first then place the right-center axis of the hub onto the clamps (B).
請參考5-1步驟決定放置固定片的角度，先使用M3x8mm螺絲(C2)鎖上兩片固定片在發電機上，再將前輪右側貼在固定片上



2. Reassemble the quick release and tighten with the mounting component (D). 再將拆下的快拆插回至前輪中心孔，向下鎖入安裝器，直至微緊



3. Loosen the original locked M3x8mm (C2) screws and put one more clamp on the spoke (as illustrated) then tighten all the clamps and dynamo F12W-PRO (A) with M3 x 8mm screws (C2) evenly and slowly in turns. (Please do not tighten the screws (C2) at once, in some cases unevenness in clamps may cause some vibrations.)
請先將原鎖好的M3x8mm螺絲(C2)鬆下，再放置多一片發電機固定片在幅條上(於圖片紅色位置)並將M3x8mm螺絲(C2)分次慢慢、平均的鎖回(螺絲請勿一次鎖緊，以防每片固定片鬆緊不均造成搖晃)

4. Please revert to the step 6-1 and follow the next steps.
請跳回至安裝步驟6-1，並接著後續的安裝步驟