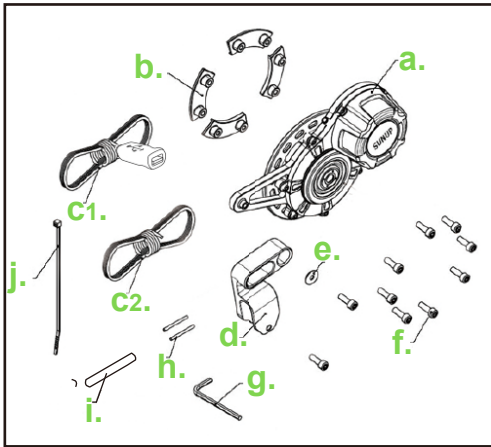


**Parts List 內含零件** --- R03W and R12W



- |   |   |
|---|---|
| a. Dynamo<br>發電機本體                          | f. M5 inner hex screws<br>M5 內六角螺絲      |
| b. Curve clamps<br>固定片                      | g. M3 inner hex wrench<br>M3 內六角扳手      |
| c1. R12W USB cable(1m)<br>R12W USB 電線(1米)   | h. Ø2.5 heat-shrink sleeve<br>Ø2.5 熱縮套管 |
| c2. R03W dynamo cable(1m)<br>R03W 發電機電線(1米) | i. Ø5 heat-shrink sleeve<br>Ø5 熱縮套管     |
| d. Shockproof rubber<br>防震橡膠                | j. Zip ties<br>束帶                       |
| e. Washer<br>華司                             |   |

**Installation Instructions 安裝說明** --- R03W and R12W



1-1 Down the chain to the smallest gear.  
將變速器調到最小齒輪。

1-2 Release the brake cable.  
脫離煞車器。



2-1 Place bicycle up-side down.  
將車翻面倒放。

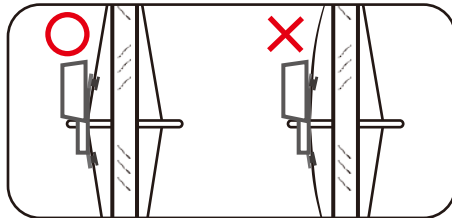
2-2 Remove quick release and wheel set.  
並卸下快拆。



3. Place center hole of dynamo rotation disc flat onto left center axis of the hub.  
將發電機平放花鼓軸心。



4-1 Spokes mount on instructions:  
a. Minimum spokes number at 28 is recommended.  
b. Minimum 3 mounting clamps.  
c. Every clamps must be mounted across two angled spokes.  
發電機與幅條鎖固說明:  
a. 輪圈幅條建議最低數量為28支以上 b. 至少鎖3片固定片 c. 每片固定片要跨過兩條幅條。



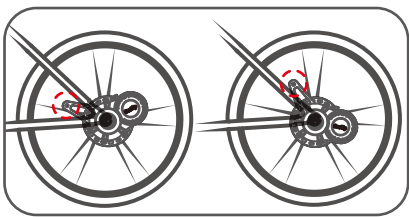
4. Keep the curve clamps flat to the disc and tighten them evenly in turns. No over tightening and bending of the spokes.  
將發電機與固定片平均鎖在幅條上，並請注意勿讓幅條變形(螺絲勿一次鎖緊,需平均鎖固於幅條,以防鎖固不均造成搖晃)。



5. Spin the wheel to test the balance of disc tightening.  
轉動輪圈測試是否鎖固平衡。



6. Put the wheel back into place of the frame dropouts.  
後輪組放回車架。



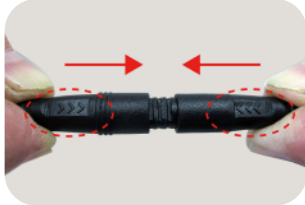
7. Turn and adjust the rotation disc lever at proper fixing position with cylinder housing free of contact. Fix it with the shockproof rubber at either chain or seat stays.  
將發電機固定桿調整到可適當鎖固防震橡膠的位置(請避免發電機本體與車架碰撞)。



8. Assemble back the quick release bolt set and well tighten it.  
鎖回快拆。



9. Tighten the shockproof rubber bracket onto the chain stay and tighten it with the dynamo lever.  
將防震橡膠鎖固在車架上，再將其與發電機固定桿鎖固。



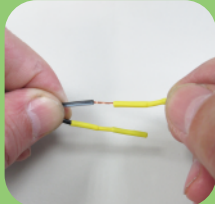
10-1 Snap on the dynamo cable in direction of arrow mark to arrow mark at two ends.  
電源線對接  
(注意公母接頭防呆箭頭對接)



10-2 Tighten the cable rout on the frame with zip ties.  
用束帶將電源線固定在車架上。

**Continue following instructions with your purchased model :**  
**以下請依照您購買的機種繼續安裝：**

### R12W Only



11-1 Remove yellow insulation tape in case of wiring with Dynamo DC LED lights.  
將與燈連接端的黃色套管拔離。



11-2 Connect the dynamo light power output wires to the wires of the head LED light in correct poles (+white, -black) by wiring together.  
將燈與電線的正負極相接  
(+白、-黑)

### R03W USB Charger Only



11-1 Connect cables of each dynamo and USB charger with their wire ends  
將發電機與USB充電母座以各自尾端裸線連接。



11-2 Two cables wired together.  
電線完成相接。



12. Twisted wires into the sleeve then heat and shrink them tight in place.  
將電線扭轉連接，並套入熱縮套管加熱收縮

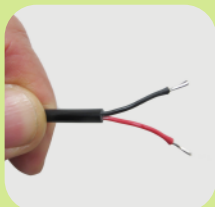


13. Tidy up the cables and USB charger port. Well store the USB charger port in a bike bag.  
將USB輸出端整理收入車包內。

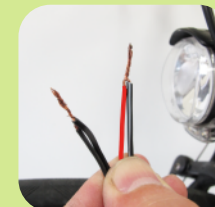


14. Plug in USB cable of the USB power pack. USB charging and indication lights on. USB charger port light in blue.  
插入行動電源，並確認燈示亮起藍燈。

### R03W DC LED lights Only



11-1 Dynamo cable wires end.  
發電機電線末端。



11.2 Connect the dynamo light power output wires to the wires of the head LED light in correct poles (+white and +red, -black and -black) by wiring together.  
將燈與發電機電線的正負極相接 (+白和紅、-黑和黑)